

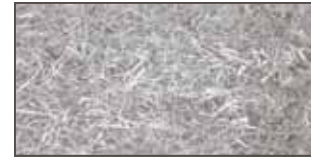
Sponsored by:  
Gibson County  
Posey County  
Vanderburgh County  
Warrick County  
SWCDs and NRCS

# Quad County Tillage Field Day\*

Thursday, July 30, 2009  
Alan Stahl Farm  
Evansville, Indiana

## Agenda

- 9:00 - **Ron Chamberlain** - earthANEW, LLC, Company Indianapolis, Indiana  
Topic: **Gypsum Applications in No-Till**
- 10:00 - **Rodney Rulon** - Rulon Farm Enterprises, Atlanta, IN  
Topic: **Cover Crops**
- 11:00 - **Marion Calmer** - Calmer's Ag Research & Calmer Corn Heads, Inc., Alpha, Illinois  
Topic: **Year Round Residue Management**
- 12:00 - **Lunch**
- 12:45- **Derrick Marcum**, President, Global Climate Solutions, LLC  
Topic: **Carbon Sequestration and Trading**



CCA Credits: 3.0- Soil & Water

**SPONSOR:**  
**DAYLIGHT**  
**FARM**  
**SUPPLY**

All times are Central Standard Time (CST)

**\*\*Speakers' bios on back side**

### **DIRECTIONS:**

I-164 to Lynch Road, East to Old Boonville Hwy, North 1 1/2 miles to Olmstead Road, turn left onto Olmstead and Stahl's Farm is the first farmstead on the left.

**Reservation Recommended**  
**Please call SWCD in:**

**Warrick**  
**812-897-2840**

**Vanderburgh**  
**812-867-0729**

**Posey**  
**812-838-4191**

**Gibson**  
**812-385-5033**



The U.S. Department of Agriculture (USDA) prohibits discrimination in all its programs and activities on the basis of race, color, national origin, sex, religion, age, disability, political beliefs, sexual orientation, or marital or family status. (Not all prohibited bases apply to all programs.) Persons with disabilities who require alternative means for communication of program information (Braille, large print, audio-tape, etc.) should contact USDA's TARGET Center at (202) 720-2600 (voice and TDD).

To file a complaint of discrimination, write USDA, Director, Office of Civil Rights, Room 326-W, Whitten Building, 1400 Independence Avenue, SW, Washington, D.C. 20250-9410 or call (202) 720-5964 (voice and TDD). USDA is an equal opportunity provider and employer.

**Ron Chamberlain, earthANEW, LLC, Indianapolis, IN**

Gypsoil is produced and distributed by earhtANEW LLC, which was created in 2008 by Ron and Cheryl Chamberlain. Both Ron and Cheryl grew up on farms in Indiana in the 1950s and 60s when tillage was a major part of every operation. Ron has worked professionally in the ag industry since 1971 - in both the United States and Europe. Working with crops and soils for the last three and a half decades has made it clear that soil structure is a major factor leading to crop success or failure. Unfortunately, most soils have been damaged over time by the effects of tillage on physical characteristics and by the effects of certain liming and fertilizing practices on soil chemistry. Though agriculture has made great strides in the areas of genetics, technology and chemistry, most of our soils have not responded to their full potential to this progress due to poor soil structure. EarthANEW's company mission is to make a positive difference in our soil' productivity while conserving resources and protecting the environment. They offer leadership and a product line, both focused on returning soils to their original productive state.

**Marion Calmer, Calmer's Ag Research and Calmer Corn Heads, Inc.**

Marion is a farmer from western Illinois and is the entrepreneur of Calmer's Ag Research and Calmer Corn Heads, Inc. He started his farming operation of 80 acres of corn and 10 gilts in 1975. In 1978 he graduated from Black Hawk East College with an Associates Degree in Applied Sciences. During his farming career, he has grown corn, soybeans, seed corn, soybean seed, and operated a swine operation. Marion has also spent several hours modifying and inventing farm machinery. During his career he has gone from conventional tillage to no-till, adopted the use of biotechnology, and has gone from growing corn and soybeans in 40-inch rows to growing both crops in 15-inch rows. He also strives to reduce input costs. In 1991 Marion was selected as one of four finalists for the Illinois Soybean Association's Young Leader Program. He has been a DuPont No-Till Neighbor and a featured speaker at the DuPont and Monsanto Residue Management Conference and at the National No-Till Conference from 1994 to the present. Marion is a corporate member of the Conservation Technology Information Center (CTIC).

**Rodney Rulon, Rulon Farm Enterprises, Atlanta, IN**

It's not easy bringing new partners into an existing farming operation, but the Rulon family of Arcadia, Indiana has been doing it successfully for 35 years. One key to their success is that they don't have senior partners and junior partners. Instead they have equal partners. It started in 1971 when Jerry Rulon, who began farming in 1963, took his brother, Doyle, in as a partner. To do that Jerry loaned Doyle 50% of the equity he had built up in the operation. That made Doyle an equal partner and entitled him to half the earnings and half the growth potential. Since then Jerry's sons, Ken and Roy, and Doyle's son Rodney, have joined the operation under similar terms. Rodney joined the operation in 1997. By then the operation had grown to 4,500 acres. Rodney has a Master's degree in Ag Systems and serves as the farm's technology manager. He received his B.S. degree in Ag Systems Management from Purdue University in May 1994.

**Derrick Marcum, President, Global Climate Solutions, LLC**

Originally from the farming community of Liberty, IN Derrick grew up working for a variety of farmers prior to attending the University of Evansville, where he received a Bachelor of Science Degree. Later he went on to receive a Masters Degree in Business Administration from Anderson University. Derrick started Global Climate Solutions LLC to help people and businesses become green in a cost effective manner and partnered with AgraGate Climate Credits Corporation in February 2009 as a contract facilitator for soil and forest carbon offsets. Currently Derrick resides in Zionsville IN, with his wife Becky, dog Presley, and they are expecting their first child August 11th.

**RSVP BY CALLING ANY OF THE  
SOIL AND WATER CONSERVATION DISTRICTS  
LISTED ON THE FRONT OF THIS BROCHURE**